



**WACKER  
NEUSON**  
*all it takes!*

## Product Guide



## Your reliable solution provider

We offer customers worldwide with a comprehensive product range of construction machines and equipment, spare parts and services. Since the beginnings of our company in 1848, the Wacker Neuson brand has stood for reliability and innovative strength.

Companies in the main construction industry, gardening and landscaping, industry and municipalities, among other sectors, rely on the innovative solutions from Wacker Neuson.

Wacker Neuson – **all it takes!**



## Our services

When you need us, we are there. We not only advise you during the purchase of your machine, but also afterwards. You can trust our expert and quick support. Find out about our extensive services for construction machines and construction equipment. With our widespread sales and service network, we are always close by.

Find out more at:  
[wackerneuson.com/services](https://wackerneuson.com/services)



### zero emission



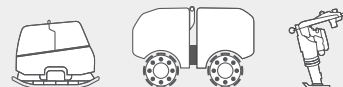
06

### Concrete technology



12

### Compaction



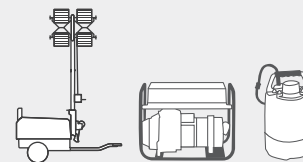
24

### Demolition technology



36

### Lighting, generators, pumps



40

### Excavators



48

### Loaders, dumpers



64

## Our digital products in an overview.

### EquipCare

Get connected with your machines



With the EquipCare telematics solution, you give your machines a voice. They actively report to you, for example to point out upcoming maintenance, possible operational malfunctions or unexpected changes in location.



Upon request, our EquipCare telematics solution can also be integrated into your existing systems.

### Dual ID

Electronic access control

For your machines, our EquipCare Dual ID is also available as an option.

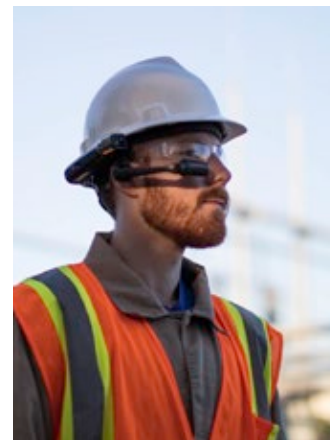
With this electronic access control, you can precisely determine who can operate your machines.

Dual ID can be easily managed in your EquipCare Manager.



### Smart Classes

The Smart Glasses are glasses for the job site, with which the service package can be digitally switched directly to the job site. It can visualize instructions on the screen of the glasses for the solution to a problem, it can draw in/mark something on the machine, and in doing so, help the operator or technician on-site to repair it. In doing so, the expert is able to see what the user of the glasses can see on the job site at any time.



### ConcreTec

Concrete consolidation was never this easy

The new assistance system for concrete consolidation by Wacker Neuson makes it possible to consolidate pre-cast concrete parts easily, transparently and reproducibly as to quality. The data-based assistance system provides the system operator with objective information on the consolidation process and real time information related to the progress of consolidation. Real-time information about the consolidation progress.



You can find more information about our digital products at:

[www.wackerneuson.com/services](http://www.wackerneuson.com/services)

## zero emission solutions.



### Battery One

Battery	Unit	BOB5	BOB10	BOB14
Installed capacity	Wh	504	1,008	1,425
Weight	kg	6.4	9.3	9.6

Battery chargers	Unit	BOC7	BOB13
Charging current	A	7	13
Charge time (BOB5/BOB10/BOB14)	(min)	90/160/255 Min.	50/95/140 Min.

### Internal vibrator

	Unit	Converter backpack ACBe	Battery-powered internal vibrator IEE
Operating weight with/without BP1000	kg	13.5 / 4.2	-
Operating weight with/without BP500	kg	10.25 / 4.2	-
Rated current	A	20	-
Input/output voltage V	V	51 (3-) / 34 (3-)	-
Output frequency	Hz	200	-
Output performance	kW	0.79	-
Vibrator head diameter	mm	-	38 / 45 / 58
Hose lengths	m	-	1.5 / 3.0 / 5.0
Running time with a battery charge (BP1000)	h	-	Up to 4 hours of running time

### Single direction vibratory plates

	Unit	AP2560e	APS1030e	APS1135e	APS1340e	APS1550e	APS2050e
Operating weight (without / with water tank)	kg	133	51/53*	61/63*	73/75*	77/82	87/92
Centrifugal force	kN	25	10	11	13	15	20
Operating width	mm	600	300	350	400	500	500
Frequency	Hz	98	98	98	98	98	98
Drive		Electric motor			Electric motor		
Electrical load rating at 3,600 rpm	kW	-	-	-	-	-	-

\*Weight depends on the additional options selected



### Vibratory rammers

	Unit	AS30e	AS50e	AS60e
Battery-powered rammers				
Ramming shoe size B	mm	150	280	280
Operating weight	kg	41.7	71	71
Stroke at ramming shoe	mm	40	44	61
Max. percussion rate	(rpm)	820	680	680
Type of drive		Electric motor	Electric motor	Electric motor

### Reversible vibratory plate

	Unit	APU3050e
Operating weight	kg	212
Centrifugal force	kN	30
Operating width	mm	500
Height (without center pole)	mm	728
Frequency	Hz	90
Drive		Electric motor
Rated power	kW	3.1
Electric start option not available		●



## zero emission solutions.

RD28e



CB250



WL20e



### Charging Box

	Unit	CB250
Weight	kg	650
Dimensions	mm	1,480 x 820 x 1,105
Class rating	–	IP54
Temperature range	°C	-20 – +40 ambient temperature
Cooling	–	Cooled air
Electrical frequency	Hz	50
Rated power	kVA	50
Charging time	h	< 4.5 (16 A)
Capacity	kWh	25

### Rollers

	Unit	RD24e	RD28e
Type of roller		Tandem roller	Tandem roller
Max. operating weight	kg	3,000	3,410
Drum width	mm	1,110	1,250
Lateral clearance	kg	–	55
Centrifugal force I/II	km/h	25/16	46/28
Drive	kg	Electric motor	Electric motor
Output (ISO 14396)	kW	16.8	24

### Wheel loader

	Unit	WL20e
Output	kW/hp	–
Bucket capacity	m <sup>3</sup>	0.19
Height/width	mm	1,939–2,336/1,025
Weight	kg	2,170–2,350
Travel speed Optional travel speed	km/h	0–15
Tipping load with bucket*	kg	1,550–1,620
Max. height of the bucket pivot point/max. dumping height	mm	2,710/2,017
Inside radius	mm	1,205

## zero emission solutions.



DT10e



DW15e



803  
dualpower

EZ17e

### Track dumpers

	Unit	DT05e	DT10e
Max. payload	kg	540	1,000
Operating weight	kg	500	890–1,030
Drive output	kW/hp	5.5/7.5	2/2.75
Travel speed	km/h	3	4
Gradeability when loaded	max. %	36	36
Bucket Struck Piled	l	260** 290**	334** 427**
Length	mm	1,024**	1,803**
Width		589**	790**
Height		1,185**	1,270**

### Wheel dumper

	Unit	DW15e
Payload	kg	1,500
Operating weight	kg	1,966–2,025
Bucket Struck Piled	l	650 800
Drive		Electric motor
Rated power	Ah/kWh	300/14.4
Motor output (ISO 3046/1)	kW/hp	6.5/8.7
Maximum travel speed	km/h	14
Articulation angle	°	± 33
Turning radius	mm	3,650
Gradeability (theoretical)	%	45
Length	mm	3,300
Width		1,304
Height		2,535

### Tracked excavators

	Unit	803 dualpower	EZ17e
Shipping weight	kg	955–1,015	1,681
Operating weight	kg	1,052–1,115	1,797–2,151
Engine output according to ISO	kW/hp	9.9/13	16.5
Digging depth	mm	1,763	2,323 2,483**
Max. dumping height	mm	2,012	2,439 2,553**
Digging radius	mm	3,090	3,900 4,050**
Length	mm	2,828	3,584
Width		700–860	990–1,300
Height		1,427*, 2,261	2,489

\*Horizontal loading frame – Straight machine \*\* Front tip skip

\* Without ROPS bar \*\* including hydraulic oil

## Internal vibrator with battery-converter backpack.



ACBe



IEe

### Internal vibrator

	Unit	Converter backpack ACBe	Battery-powered internal vibrator IEe
Operating weight with/without BP1000	kg	13.5 / 4.2	-
Operating weight with/without BP500	kg	10.25 / 4.2	-
Rated current	A	20	-
Input/output voltage V	V	51 (3-) / 34 (3-)	-
Output frequency	Hz	200	-
Output performance	kW	0.79	-
Vibrator head diameter	mm	-	38 / 45 / 58
Hose lengths	m	-	1.5 / 3.0 / 5.0
Running time with a battery charge (BP1000)	h	-	Up to 4 hours of running time

## Internal vibrator.



### Basic: Flexible shafts

	Unit	SM1-E	SM2-E	SM4-E	SM0-S	SM1-S	SM2-S	SM3-S	SM4-S	SM5-S	SM7-S	SM9-S
Length	m	1	2	4	0.5	1	2	3	4	5	7	9
Weight	kg	1.5	2.5	4.3	1.3	2.7	4.3	5.9	7.1	9.3	12.9	15.1

### Basic: Vibrator heads

	Unit	H25	H25S	H25HA	H35	H35S	H35HA	H45	H45S	H45HA	H50HA	H55	H65
Diameter	mm	25	25	26	35	35	36	45	45	45	50	57	65
Length	mm	440	295	380	410	310	405	385	305	390	395	410	385
Weight	kg	1.3	0.8	1.3	2.1	1.6	2.3	3.4	2.8	3.3	3.9	5.3	6.2

### Basic: Drive system

	Unit	M1500	M2500	A5000/160	L5000/225
Drive		Double insulated universal motor		Air-cooled, single cylinder, 4-stroke, gasoline engine from Briggs & Stratton XR750	Air-cooled, single cylinder, 4-stroke, Kohler diesel engine
Voltage	V	230 1~		-	-
Current	A	6.5		-	-
Output	kW/hp	1.5		4/5.4	3.3/4.5
Weight	kg	5.3		23.7	35.6

### Advanced: Internal vibrator

	Unit	IE38	IE45	IE58
Vibrator head diameter	mm	38	45	58
Effective compaction Ø*	cm	-	-	-
Voltage	V	42	42	42
Current	A	5	8	12
Frequency	Hz	200	200	200
Protection hose**/ Power cable	m	10/15	10/15	10/15

### Advanced: Internal vibrators with integrated converter

	IEC38	IEC45	IEC58
Vibrator head diameter	38	45	58
Effective compaction Ø*	-	-	-
Voltage	220-240 1~	220-240 1~	220-240 1~
Current	3	4	5
Frequency	50-60	50-60	50-60
Protection hose**/ Power cable	10/15	10/15	10/15

\* This is non-binding information based on the practical experience of our customers under certain operating conditions. This information may differ under certain conditions. We recommend first attempting trial concreting work under the operating conditions.

\*\* Maximum protection hose lengths, various hose lengths available.

## Internal vibrators.



IREN

5 models

IRSEN

4 models

IRFU

5 models

### Premium: Internal vibrator

	Unit	IREN30	IREN38	IREN45	IREN58	IREN65
Vibrator head diameter	mm	30	38	45	58	65
Effective compaction Ø*	cm	40	50	60	85	100
Voltage	V	42/250	42/250	42/250	42/250	42/250
Current	A	3.5/0.6	7/1.4	10/1.85	17.3/3	25/4.2
Frequency	Hz	200	200	200	200	200
Protection hose**/ Power cable	m	18/15	18/15	18/15	18/15	18/15

### Premium: Internal vibrators with integrated converter

	Unit	IRFU30	IRFU38	IRFU45	IRFU58	IRFU65	IRSE-FU45	IRSE-FU58
Vibrator head diameter	mm	30	38	45	57	65	45	58
Effective compaction Ø*	cm	40	50	60	85	100	60	85
Voltage	V	220-240 1~	220-240 1~	220-240 1~	220-240 1~	220-240 1~	220-240 1~	220-240 1~
Current	A	2.2	3.5	4.8	6	7.5	4.8	6
Frequency	Hz	50-60	50-60	50-60	50-60	50-60	L 50-60	50-60
Protection hose**/ Power cable	m	15/15	15/15	15/15	15/15	15/15	0.8/15	0.8/15

### Premium: Vibrator heads

	Unit	IRflex30	IRflex38	IRflex45	IRflex58
Vibrator head diameter	mm	30	38	45	58
Weight	kg	6.7	10.7	12	17
Length of protective hose max.	m	10	10	10	10
Frequency	Hz	200	200	200	200
Oscillations	rpm	12,000	12,000	12,000	12,000

\* This is non-binding information based on the practical experience of our customers under certain operating conditions. This information may differ under certain conditions. We recommend first attempting trial concreting work under the operating conditions.

## Internal vibrators with integrated converter.



IRSE-FU

2 models

IRFUflex

4 models

### Premium: Internal vibrators

	Unit	IRSEN30	IRSEN38	IRSEN45	IRSEN58
Vibrator head diameter	mm	30	38	45	58
Effective compaction Ø*	cm	40	50	60	85
Voltage	V	42/250	42/250	42/250	42/250
Current	A	3.5/0.6	7/1.4	10/1.85	17.3/3
Frequency	Hz	200	200	200	200
Protection hose**/ Power cable	m	0.8/15	0.8/15	0.8/15	0.8/15

### Premium: converter

	Unit	FUflex4/230
Weight	kg	9.4
Output voltage	V	230
Rated current	A	6
Output current	A	3.5
Cable length	m	15

\*\* Maximum protection hose lengths, various hose lengths available.

## External vibrators.

### 2-series

**AR26**  
**ARFU26**

7 models  
3,000–6,000 rpm  
3.00 – 6.47 kN



### 3-series

**AR34**

4 models  
3,000–6,000 rpm  
3.47 – 6.98 kN



### 4-series

**AR43**

4 models  
3,000–6,000 rpm  
10.10 – 10.52 kN



**VT**

**Vibratory table**  
Manufactured according to the  
customer's wishes

### 5-series

**AR52**  
**AR53**  
**AR54**

9 models  
3,000–9,000 rpm  
13.77 – 14.14 kN



### 6-series

**AR63**  
**AR64**

7 models  
1,500–9,000 rpm  
5.05 – 19.03 kN



### 7-series

**AR75**

7 models  
1,500–9,000 rpm  
10.29 – 26.56 kN



### PEV series

**PEV10**  
**PEV14**  
**PEV27**  
**PEV45**  
**PEV60**

5 models  
8,000–16,500 rpm  
10 – 60 kN





## Frequency converters.

**FUE-M38**

**FUE M/S 75A**



**FUH20**



## Vibratory screed rebar tier.

**P35A**



**DF16**



### Frequency converters

	Unit	FUE10 42/200W	FUE10 250/200W	FUE M/S 75A	FUE M/S 85A	FUE M/S 225A	FUH20	FUH35	FUH70*
Weight	kg	87	87	29.5	42	150	8.9	15	24
Input/ output voltage	V	400 3~/ 42 3~	415 3~/ 250 3~	400/ 42 3~	400/ 42 3~	400/ 42	230/ 42	230/ 42	230/ 42
Input/ output frequency	Hz	50-60/ 0-200	50-60/ 0-200	50-60/ 0-200	50-60/ 0-200	50-60/ 0-200	50/ 200	50-60/ 200	50-60/ 200
Input/ output current	A	24.5/145	24.5/25	13/75	13/85	29/225	7.8/20	9.5/35	16/58
Power cable	m	3	3	2.5	2.5	-	1.5	2.2	2.2

### Frequency converter

	Unit	FUE-M38
(Standard) power levels		17A, 23A, 31A, 43A, 57A, 71A*
Housing dimensions 1 (17-43A)	mm (LxW xH)	800x1,200x400*
Housing dimensions 2 (57+71A)	mm (LxW xH)	800x1,600x500*

\* Other sizes and power classes are available by customer request.

### Wet screed

	Unit	P35A
Weight	kg	15.5
Drive		Air-cooled, single cylinder, 4-stroke, gasoline engine
Output	kW/hp	1.2/1.6
At rpm	(rpm)	7,000

\* Version with 0-200 Hz available

### Rebar tier

	Unit	DF16
Operating weight	kg	2.2
Number of ties per tie wire strip (magazine)	Pieces	77
Tie speed	Knots / h	approx. 1,000
Tie speed	Seconds / knot	approx. 0.8
Outer diameter of the solid round bar material to be tied	mm	Minimum 6+6/ Maximum 16+16
Tie order sizes	copper-coated steel wire	Box: Content 7,700 ties Pallet: Content 138,600 ties

# Rammers.



**Battery-powered rammers**

3 models



**2-Stroke rammers**

7 models



**4-Stroke rammers**

3 models



**Diesel rammer**

1 model

## Vibratory rammers

	Unit	AS30e	AS50e	AS60e	BS30	BS50-2	BS60-2	BS70-2
		Battery-powered rammers			2-Stroke rammer			
<b>Ramming shoe size B</b>	<b>mm</b>	150	280	280	150	165/280	280	280
<b>Operating weight</b>	<b>kg</b>	41.7	71	71	32	56/59	66	74
<b>Stroke at ramming shoe</b>	<b>mm</b>	40	44	61	42	64	65	65
<b>Max. percussion rate</b>	<b>(rpm)</b>	820	680	680	820	700	700	700
<b>Drive</b>		Electric motor	Electric motor	Electric motor	WM 80	WM 80	WM 80	WM 80

	Unit	BS50-2plus	BS60-2plus	BS70-2plus	BS50-4As	BS60-4As	BS70-4As	DS70
		2-Stroke rammer			4-Stroke rammer			Diesel rammer
<b>Ramming shoe size B</b>	<b>mm</b>	165/280	280	280	280	280	280	270
<b>Operating weight</b>	<b>kg</b>	56/59	66	74	65	72	80	83
<b>Stroke at ramming shoe</b>	<b>mm</b>	64	65	65	61	81	65	75
<b>Max. percussion rate</b>	<b>(rpm)</b>	700	700	700	680	680	680	670
<b>Drive</b>		WM 80	WM 80	WM 80	Honda GXR120	Honda GXR120	Honda GXR120	Yanmar L 48

## Forward traveling vibratory plates.



APS1135e



AP2560e



BPS1030



WP1550

DPS2050

### Single direction vibratory plates

	Unit	AP2560e	APS1030e	APS1135e	APS1340e	APS1550e	APS2050e
Operating weight (without / with water tank)	kg	133	51/53*	61/63*	73/75*	77/82	87/92
Centrifugal force	kN	25	10	11	13	15	20
Operating width	mm	600	300	350	400	500	500
Frequency	Hz	98	98	98	98	98	98
Drive		Electric motor			Electric motor		
Electrical load rating at 3,600 rpm	kW	-	-	-	-	-	-

	Unit	BPS1030	BPS1135	BPS1340	BPS1550	BPS2050	DPS2050	WP1540	WP1550
Operating weight (without / with water tank)	kg	53/58*	61/66*	71/75*	84/89	87/99	110/115	86-92	90-98
Centrifugal force	kN	10	11	13	15	20	20	15	15
Operating width	mm	300	350	400	500	500	500	430	500
Frequency	Hz	98	98	98	98	98	98	98	98
Drive		Honda GX 120			Briggs & Stratton XR750		Hatz 1B20	Honda GX 160	
Electrical load rating at 3,600 rpm	kW	2.6	2.6	2.6	-	-	-	3.6	3.6

\* Weight depends on the additional options selected

## Reversible vibratory plates.



### Reversible vibratory plates

	Unit	APU3050e	WPU1550A	BPU2540	DPU2540/50/60	BPU3050	DPU3050	DPU3060
		30 kN	15 kN	25 kN	25 kN		30 kN	
Operating weight	kg	212	89–96	145	160/166/171	181	181	190–215*
Centrifugal force	kN	30	15	25	25	30	30	30
Operating width	mm	500	498	400	400/500/600	500	500	600
Height (without center pole)	mm	728	556	666	736	777	777	777
Frequency	Hz	90	98	90	90	90	90	90
Drive		Electric motor	Honda GX 160	Honda GX 160	Hatz 1 B 20	Honda GX270	Hatz 1 B 30	Hatz 1 B 30
Rated power	kW	3.1	3.6 (at 3,600 rpm)	3.1 (at 2,840 rpm)	3.1 (at 2,800 rpm)	5.1 (at 3,600 rpm)	4.2 (at 2,800 rpm)	4.2 (at 2,800 rpm)
Electric start option not available		●	–	–	–	–	○	○

	Unit	DPU3070	BPU3750	DPU3750	DPU3760	DPU40	DPU45	BPU5545
		30 kN		37 kN	37 kN	40 kN	45 kN	55 kN
Operating weight	kg	195	247	240	274	374	376	340
Centrifugal force	kN	30	37	37	37	40	45	55
Operating width	mm	700	500	500	600	604	604	604
Height (without center pole)	mm	777	777	777	–	790	790	725
Frequency	Hz	90	90	90	90	69	69	69
Drive		Hatz 1 B 30	Honda GX270	Hatz 1 B 30	Hatz 1 B 30	Yanmar L70V	L70V	Honda GX390
Rated power	kW	4.2 (at 2,800 rpm)	5.1 (at 3,600 rpm)	4.2 (at 2,800 rpm)	4.2 (at 2,800 rpm)	4.5 (at 3,000 rpm)	4.5 (at 3,000 rpm)	6.4 (at 2,600 rpm)
Electric start option not available		–	–	○	●	●	●	–

# Reversible vibratory plates.



## Reversible vibratory plates

	Unit	DPU5545 55 kN	DPU6555 65 kN	DPU80 80 kN	DPU80r 80 kN	DPU90 90 kN
Operating weight	kg	399–447*	480–527	756–771	709–724	756–771
Centrifugal force	kN	55	65	80	80	90
Operating width	mm	604–750	710–860	670–770	670–770	670–770
Height (without center pole)	mm	790	861	830	830	830
Frequency	Hz	69	69	56	56	63
Drive		Hatz 1 D 42S	Hatz 1 D 81S	Kohler KDW 702	Kohler KDW 702	Kohler KDW 702
Rated power	kW	6.4 (at 2,850 rpm)	9.6 (at 2,800 rpm)	11 (at 3,600 rpm)	11 (at 3,600 rpm)	11.7 (at 3,600 rpm)
Electric starter option available		○	○	●	●	●

	Unit	DPU110 110 kN	DPU110r 110 kN	DPU110 Coupling set	DPU130r 130 kN
Operating weight	kg	813–830	793–810	2,616	1,170
Centrifugal force	kN	110	110	3*110	130
Operating width	mm	870–970	870–970	3,000	1,202
Height (without center pole)	mm	830	830	830	996
Frequency	Hz	60	60	60	58
Drive		Kohler KDW 702	Kohler KDW 1003	Kohler KDW 1003	Kohler KDW 1404
Rated power	kW	18.5 (at 3,600 rpm)	18.5 (at 3,600 rpm)	16 (at 3,600 rpm)	21 (at 2,700 rpm)
Electric starter option available		●	●	–	●

# Rollers.

## RTSC3



### Trench roller

	Unit	RTSC3
Operating weight	kg	1,465
Drum diameter	mm	520
Drum width	mm	560-820
Drive		Liquid-cooled, 3-cylinder Kohler diesel engine

## RD7



### Tandem roller

	Unit	RD7
Operating weight	kg	672/735/710*
Drum diameter	mm	400
Drum width	mm	650
Drive		Hatz diesel engine (optionally with electric start), Honda gasoline engine, Yanmar diesel engine

\* depending on equipment



# Rollers.

**RD18**

**RD40**


## Tandem rollers

	Unit	RD18-80	RD18-100	RD18-100C	RD24-100*	RD24-100C*	RD24-1000*	RD28-120**
Type of roller		Tandem roller	Tandem roller	Combination roller	Tandem roller	Combination roller	Oscillation roller	Tandem roller
Operating weight CECE	kg	1,580	1,670	1,630	2,475	2,385	2,525	2,695
Max. operating weight	kg	1,840	1,950	1,830	3,190	3,119	3,240	3,410
Drum width	mm	856	1,056	1,000	1,000	1,000	1,000	1,200
Lateral clearance	mm	-	-	-	55/55	55/55	55/55	55/55
Centrifugal force I/II	kN	25/16	25/16	25/16	46/28	46/28	46/28	52/32
Drive		Kubota D1105	Kubota D1105	Kubota D1105	Kubota D1803-CR	Kubota D1803-CR	Kubota D1803-CR	Kubota D1803-CR
Output (ISO 14396)	kW/hp	16.8/22.9	16.8/22.9	16.8/22.9	24/32.6	24/32.6	24/32.6	24/32.6

	Unit	RD28-120C**	RD28-1200**	RD40-130	RD24e	RD28e	RD40-130C	RD40-1300
Type of roller		Combination roller	Oscillation roller	Tandem roller	Tandem roller	Tandem roller	Combination roller	Oscillation roller
Max. operating weight	kg	3,320	3,470	4,920	3,000	3,410	4,790	5,230
Drum width	mm	1,200	1,200	1,300	1,110	1,250	1,300	1,300
Lateral clearance	mm	55/55	55/55	63/63	-	55	63/63	63/63
Centrifugal force I/II	kN	52/32	52/32	64/39	25/16	46/28	-	64/39
Drive		Kubota D1803-CR	Kubota D1803-CR	Kubota V2403-CR	Electric motor	Electric motor	Kubota V2403-CR	Kubota V2403-CR
Output (ISO 14396)	kW/hp	24/32.6	24/32.6	37.4/50.9	16.8	24	37.4/50.9	37.4/50.9

	Unit	RD45-140	RD45-140C	RD45-1400
Type of roller		Tandem roller	Combination roller	Oscillation roller
Operating weight CECE	kg	4,345	3,995	4,435
Max. operating weight	kg	5,300	4,960	5,640
Drum width	mm	1,380	1,380	1,380
Lateral clearance	mm	63/63	63/63	63/63
Centrifugal force I/II	kN	64/39	64/39	64/39
Drive		Kubota V2403-CR	Kubota V2403-CR	Kubota V2403-CR
Output (ISO 14396)	kW/hp	37.4/50.9	37.4/50.9	37.4/50.9

\* RD24 and RD28: Also available without DPF, with Kubota engine D1703, 18.5 kW / 25.2 hp.

\*\* RD28: Also available without DPF, with Kubota engine D1703, 18.5 kW.

## Rollers.



### Single drum soil compactors

	Unit	RC50	RC50p	RC70	RC70p	RC70vo
Max. operating weight	kg	6,040	5,530	8,040	6,920	6,830
Operating weight with roll over protection system (CECE)	kg	4,815	4,935	6,320	6,190	6,105
Drum width	mm	1,370	1,370	1,680	1,680	1,680
Left/right lateral clearance	mm	65/65	65/65	80/70	80/70	80/70
Turning radius (inside)	mm	3,375	3,375	3,310	3,310	3,310
Type of drum	-	Smooth/undivided	cleated	Smooth/undivided	cleated	Smooth/undivided
Tire size in rear	-	AW 12.4-24 8 PR	TR 12.4-24 8 PR	AW 14.9-24 8 TL	TR 14.9-24 8 TL	AW 14.9-24 8 TL
Drive	-	Kubota diesel engine V3307-CR-T		Kubota diesel engine V3307-CR-T		
Output (ISO 14396)	kw	55.4	55.4	55.4	55.4	55.4
Fuel tank capacity	l	123	123	123	123	123
Infinitely variable speed	km/h	0-12.5	0-12.5	0-12.5	0-12.5	0-12.5
Gradeability with/without vibration	%	55/60	55/60	55/60	55/60	55/60
Centrifugal force in front I/II	kN	69	69	125/95	125	123

# Breakers.



## Gasoline breakers

	Unit	BH55				BH65			
<b>L x W x H (without attachment)</b>	mm	843x492 x318	777x492 x346	777x492 x346	833x492 x346	848x492 x346	858x492 x346	905x492 x346	905x492 x346
<b>Weight (without tools)</b>	kg	20.5	23	23	24	24	24	25	25
<b>Tool holder</b>	mm	Ø 27x80	Ø 27x80	hex 25x108	hex 28x160	Ø 27x80	hex 25x108	hex 28x160	hex 32x160
<b>Percussion rate</b>	rpm	1,650	1,300	1,300	1,300	1,250	1,250	1,250	1,250
<b>Single stroke impact energy</b>	J	40	55	55	55	65	65	65	65
<b>Rated power output</b>	kW	1.6	1.6	1.6	1.6	1.7	1.7	1.7	1.7
<b>Tank capacity</b>	l	1.8	1.8	1.8	1.8	1.8	1.8	1.8	1.8

	Unit	BH55rw		
<b>L x W x H (without attachment)</b>	mm	842x492x346	898x492x346	898x492x346
<b>Weight (without tools)</b>	kg	25	26	26
<b>Tool holder</b>	mm	Ø 27x80	hex 28x160	hex 32x160
<b>Percussion rate</b>	rpm	1,350	1,350	1,350
<b>Single stroke impact energy</b>	J	55	55	55
<b>Rated power output</b>	kW	1.6	1.6	1.6
<b>Tank capacity</b>	l	1.8	1.8	1.8

## Floor saws.



### Floor saws

	Unit	BFS735	BFS940
L x W x H	mm	830x488x880	840x575x1,010
Weight	kg	69	86
Max. blade diameter	mm	350	350-400
Max. depth of cut	mm	120	145
Blade arbor	mm	25.4	25.4
Power output at 3,600 rpm	kW	3.7	6.3
Gasoline tank capacity	l	4.3	5.3

	Unit	BF1345	BFS1350
L x W x H	mm	860x575x1,010	890x575x1,010
Weight	kg	93	94
Max. blade diameter	mm	350-450	350-500
Max. depth of cut	mm	170	195
Blade arbor	mm	25.4	25.4
Power output at 3,600 rpm	kW	8.7	8.7
Gasoline tank capacity	l	6.1	6.1

## Cut-off saw.



### Cut-off saw

	Unit	BTS635s
L x W x H	mm	825 x 315 x 420
Weight	kg	11.6
Max. blade diameter	mm	350
Blade arbor	mm	25.4
Max. depth of cut	cm	12.8
Output	kW	4.3
Gasoline tank capacity	l	1.1

## Lighting.



LTE

### Light tower

	Unit	LTE
Length		2,550
Width	mm	1,380
Height		2,430*
Light source height	m	8.5
Type of lamp		LED

\* in transport position

## Generators.



CB250

### Charging Box

	Unit	CB250
Weight	kg	650
Dimensions	mm	1,480 x 820 x 1,105
Class rating	-	IP54
Temperature range	°C	-20 – +40 ambient temperature
Cooling	-	Cooled air
Electrical frequency	Hz	50
Rated power	kVA	50
Charging time	h	< 4.5 (16 A)
Capacity	kWh	25

ZERO EMISSION

CONCRETE  
TECHNOLOGY

COMPACTION

DEMOLITION  
TECHNOLOGY

GENERATORS,  
PUMPS,  
LIGHTING

EXCAVATORS

LOADERS, DUMPERS

# Generators.



**GV5003**



**GS12Ai**

## Generators

	Unit	GV 2500	GV 5000	GV 5003		GV7000	GV7003	GS12
Length		623	729	729		729	729	960
Width	mm	409	500	500		500	500	640
Height		500	536	536		536	536	667
Weight (empty)	kg	41	61	75		72	81	175
Continuous (prime) power output	kVA	2.1	4	1~ 3.4, 3~ 4.2		5.4	1~ 3.4, 3~ 6	1~ 6.94, 3~ 11.83
Rated current	A for 1- A for 3-	10.0 -	18.8 -	14.1 8		25.1 -	14.1 10.8	27.1 17.1
Frequency	Hz	50	50	50		50	50	50
Drive manufacturer		Honda	Honda	Honda		Honda	Honda	Honda
Tank capacity (fuel)	l	11	11	11		11	11	24
Connection of plug receptacles		2x Schuko 230 V, 16 A	2x Schuko 230 V, 16 A	1x Schuko 230 V, 16 A 1x CEE 230V, 16A 1x CEE 400V, 16A		1x Schuko 230V, 16A 1x CEE 230V, 32A	1x Schuko 230V, 16A 1x CEE 230V, 16A 1x CEE 400V, 16A	2x Schuko 230V, 16A 1x CEE 230V, 16A 1x CEE 400V, 16A



# Pumps.



**PG2**



**PTS4A**

## Fresh water pumps

	Unit	PG2	PG3
Intake and pressure pipe diameter	mm	50	75
Length	mm	480	515
Width		375	405
Height		395	460
Operating weight	kg	24	31
Total head m	m	30	30
Max. discharge volume	l/min	600	1,000
Max. solids diameter	mm	6.5	6.5
Drive manufacturer		Honda	Honda

## Diaphragm Pumps

	Unit	PD12A	PD13A
Intake and pressure pipe diameter	mm	50	75
Length	mm	996	1,057
Width		455	455
Height		585	589
Operating weight	kg	59	63
Total head	m	15	15
Max. discharge volume	l/min	189	333
Max. solids diameter	mm	38	41
Drive manufacturer		Honda	Honda

## Centrifugal pumps

	Unit	PT2A	PT3A	PTS4A
Intake and pressure pipe diameter	mm	50	80	100
Length	mm	550	673	915
Width		466	508	890
Height		501	571	890
Operating weight	kg	43	67	150
Total head	m	32	29.5	32
Max. discharge volume	l/min	625	1,315	2,609
Max. solids diameter	mm	25	38	50
Drive manufacturer		Honda	Honda	Honda

# Pumps.



## 1~ dirty water pumps

	Unit	PST2 400	PST3 750	PS2 500	PSA2 500	PS2 800	PSA2 800	PS2 1500
Discharge tube diameter	mm	50	80	50	50	50	50	50
Length	mm	265	285	185	220	187	223	187
Width		185	184	185	185	187	187	187
Height		330	389	355	355	341	341	600
Operating weight	kg	11.3	19	9.5	10	13.2	13.8	32.5
Total head	m	12	18	11	11	15	15	17.5
Max. discharge volume	l/min	200	300	220	220	310	310	420
Max. solids diameter	mm	9.5	7	6	6	6	6	6
Voltage	V	230	230	230	230	230	230	230

## 3~ dirty water pumps 1.5–3.7 kW

	Unit	PS2 1503	PS3 1503	PS2 1503L	PSA2 1503L*	PS2 2203	PS3 2203	PS2 2203L	PSA2 2203L**	PS2 3703	PS3 3703	PS4 3703
Discharge tube diameter	mm	50	75	50	50	50	75	50	50	50	75	100
Length	mm	235	235	240	240	235	235	240	240	285	285	285
Width		215	215	240	240	215	215	240	240	250	250	250
Height		550	550	392	482	570	570	412	482	655	655	675
Operating weight	kg	29	29	19.5	20	32	32	23	23.5	55	55	55
Total head	m	21.5	14.4	20	20	26	20.4	24	24	36.5	29	18
Max. discharge volume	l/min	430	670	420	420	500	800	530	530	450	900	1,440
Max. solids diameter	mm	8.5	8.5	8.5	8.5	8.5	8.5	8.5	8.5	8.5	8.5	8.5
Voltage	V	400	400	400	400	400	400	400	400	400	400	400

## 3~ dirty water pumps 5.5–11 kW

	Unit	PS3 5503	PS4 5503	PS4 7503HH	PS4 7503HF	PS4 11003HH	PS4 11003HF
Discharge tube diameter	mm	75	100	100	100	100	100
Length	mm	305	305	330	330	375	375
Width		260	260	315	315	350	350
Height		695	705	785	785	805	805
Operating weight	kg	66	66	93	93	130	130
Total head	m	32	22.5	40	31	48.5	32.5
Max. discharge volume	l/min	1,100	1,750	1,400	2,040	1,440	2,440
Max. solids diameter	mm	8.5	8.5	8.5	20	8.5	20
Voltage	V	400	400	400	400	400	400

\* Automatic version available: PSA2 1503L: weight: 20 kg, height: 482 mm.

\*\* Automatic version available: PSA2 2203L: weight: 23.5 kg, height: 482 mm.

## Tracked excavators.

803  
dualpower



803



### Tracked excavators

	Unit	803 dualpower	HP18	803
Shipping weight	kg	955–1,015	190*	931–992
Operating weight	kg	1,052–1,115	192*	1,029–1,115
Drive output according to ISO	kW/hp	9.9/13	7.5/10	9.9/13
Digging depth	mm	1,763	/	1,763
Max. dumping height	mm	2,012	/	2,012
Digging radius	mm	3,090	/	3,090
Length	mm	2,828	930	2,828
Width	mm	700–860	720	700–860
Height	mm	1,427**, 2,261	836	1,427**, 2,261

\* Includes hydraulic oil  
\*\* Without ROPS frame

## Tracked excavators.



### Tracked excavators

	Unit	ET16	EZ17	EZ17e
Shipping weight	kg	1,402 – 1,602	1,595 – 1,822	1,681
Operating weight	kg	1,529 – 1,842	1,724 – 1,950	1,797 – 2,151
Drive output according to ISO	kW/hp	13.8/18.5	13.8/18.5	16.5
Digging depth	mm	2,242 2,413*	2,326 2,486*	2,323 2,483*
Max. dumping height	mm	2,371 2,493*	2,436 2,550*	2,439 2,553*
Digging radius	mm	3,700 3,861*	3,899 4,050*	3,900 4,050*
Length		3,644	3,585	3,584
Width	mm	990 – 1,300	990 – 1,300	990 – 1,300
Height		2,285	2,362	2,489

\* Long dipper stick (option)

## Tracked excavators.



**ET18**



**ET20**



**ET24**

### Tracked excavators

	Unit	ET18	ET20	ET24
Shipping weight	kg	1,582 – 2,060	1,862 – 2,182	2,057 – 2,401
Operating weight	kg	1,725 – 2,203	2,005 – 2,526	2,200 – 2,746
Drive output according to ISO	kW/hp	13.8/18.5	13.8/18.5	13.8/18.5
Digging depth	mm	2,202 2,402*	2,483 2,683*	2,402 2,602*
Max. dumping height	mm	2,510 2,621*	2,713 2,836*	2,748 2,870*
Digging radius	mm	3,802 3,989*	4,129 4,317*	4,146 4,334*
Length		3,854	4,049	4,022
Width	mm	990–1,300	990–1,300	1,400
Height		2,285	2,295**	2,392
Vertical Digging System VDS	°	(15°)**	(15°)**	(15°)**

\* Long dipper stick (option)

\*\* Option

ZERO EMISSION

CONCRETE  
TECHNOLOGY

COMPACTION

DEMOLITION  
TECHNOLOGY

GENERATORS,  
PUMPS, LIGHTING

EXCAVATORS

LOADERS, DUMPERS

## Tracked excavators.



**EZ26**



**ET35**



**EZ36**

### Tracked excavators

	Unit	<b>EZ26</b>	<b>ET35</b>	<b>EZ36</b>
Shipping weight	kg	2,469–3,161	3,365–4,276	3,530–4,446
Operating weight	kg	2,571–3,513	3,450–4,361	3,720–4,945
Drive output according to ISO	kW/hp	15.8/21.5	18.2/24.4	18.2/24.4
Digging depth	mm	2,544–2,744	3,245/3,166–3,497/3,416*	3,247/3,172–3,497/3,422*
Max. dumping height	mm	2,840–2,970	3,337–3,489*	3,336/3,411–3,489/3,564*
Digging radius	mm	4,613–4,805	5,270–5,507*	5,298–5,582*
Length		4,266	5,268/5,271**	4,881/5,508**
Width	mm	1,570	1,630	1,750
Height		2,414	2,491/2,711**	2,491/2,711**
Vertical Digging System VDS	°	(15°)**	(15°)**	(15°)**

\* Long dipper stick (option)

\*\* Option



## Tracked excavators.



EZ50

ET42



ET58

EZ80

### Tracked excavators

	Unit	ET42	EZ50	ET58	EZ80
Shipping weight	kg	3,807–4,609	4,607–5,454	4,807–5,630	7,588–8,877
Operating weight	kg	4,032–4,824	4,847–5,685	5,052–6,386	7,918–9,544
Drive output according to ISO	kW/hp	32.5/46	32.5/46	33.4/45.4	42/56.3
Digging depth	mm	3,344 3,544*	3,467 3,667*	3,767 4,017*	3,919 4,169*
Max. dumping height	mm	3,573 3,703*	3,655 3,784*	3,834 3,995*	4,587 4,749*
Digging radius	mm	5,489 5,678*	5,988 6,105*	6,039 6,277*	6,955 7,190*
Length		5,146	5,467–6,035*	5,446*–5,455	6,939–6,944*
Width		1,750	1,960	1,960	2,250
Height		2,494	2,555–2,667	2,550–2,661	2,562–2,738

\* Long dipper stick (option)

\*\* Option

ZERO EMISSION

CONCRETE  
TECHNOLOGY

COMPACTION

DEMOLITION  
TECHNOLOGYGENERATORS,  
PUMPS, LIGHTING

EXCAVATORS

LOADERS, DUMPERS

## Tracked excavators.

### ET65



#### Tracked excavators

	Unit	ET65
Shipping weight	kg	5,806–6,682
Operating weight	kg	6,078–7,358
Drive output according to ISO	kW/hp	42/56.3
Digging depth	mm	3,757 4,003* 3,879** 4,184****
Max. dumping height	mm	3,993 4,714* 4,684** 4,916****
Digging radius	mm	6,224 6,508* 6,601** 6,890****
Length Width Height	mm	6,100 – 6,210/** 1,950 2,478–2,654

\* Long dipper stick (option)  
\*\* Option

### ET90



#### Tracked excavators

	Unit	ET90
Shipping weight	kg	8,348–9,625
Operating weight	kg	8,710–10,506
Drive output according to ISO	kW/hp	55.4/75.3
Digging depth	mm	4,325 4,625* 4,379** 4,679****
Max. dumping height	mm	5,066 5,272* 5,674** 5,940****
Digging radius	mm	7,331 7,620* 7,596** 7,889****
Length Width Height	mm	6,468 – 7,139/** 2,250 2,562 – 2,744/**

\* Long dipper stick (option)  
\*\* Option

ZERO EMISSION

CONCRETE  
TECHNOLOGY

COMPACTION

DEMOLITION  
TECHNOLOGYGENERATORS,  
PUMPS, LIGHTING

EXCAVATORS

LOADERS, DUMPERS

## Tracked excavators.



### Tracked excavators

	Unit	ET145
Shipping weight	kg	14,917–15,701
Operating weight	kg	15,551–17,275
Drive output according to ISO	kW/hp	55.4/75.3
Digging depth	mm	4,981 5,481*
Max. dumping height	mm	5,620 5,945*
Digging radius	mm	8,261 8,727*
Length Width Height	mm	7,720/7,788* 2,490 2,786

\* Long dipper stick (option)

## Wheeled excavators.



### Wheeled excavators

	Unit	EW65
Shipping weight	kg	6,472–7,720
Operating weight	kg	6,755–8,647
Drive output according to ISO	kW/hp	42/56.3
Digging depth	mm	3,531 3,831* 3,596** 3,895***
Max. dumping height	mm	4,207 4,389* 4,961** 5,195***
Digging radius	mm	6,220 6,504* 6,590** 6,877***
Length Width Height	mm	6,207–6,425 2,088 2,952

\* Long dipper stick (option)  
\*\* Articulated boom (option)  
\*\*\* Dual tires

## Wheeled excavators.



### Wheeled excavators

	Unit	EW100
Shipping weight	kg	10,320–11,550
Operating weight	kg	10,625–11,855
Drive output according to ISO	kW/hp	55/75 100/136*
Max. digging depth	mm	4,968
Max. dumping height	mm	6,260
Max. digging radius	mm	7,713
Length		6,707
Width	mm	2,450
Height		2,963

\* Option motor



ZERO EMISSION

CONCRETE  
TECHNOLOGY

COMPACTION

DEMOLITION  
TECHNOLOGYGENERATORS,  
PUMPS, LIGHTING

EXCAVATORS

LOADERS, DUMPERS

## Wheel loaders.



### Wheel loaders

	Unit	WL20e	WL20	WL25	WL28	WL32
Output	kW/hp	–	18.4/25	18.4/25	18.4/25 (33.3/45.3 // 40.1/54.5)	45/61.2
Bucket capacity	m <sup>3</sup>	0.19	0.19	0.30	0.42	0.47
Height/width	mm	1,939–2,336/ 1,025	1,880–2,302 / 1,076	1,843–2,360 / 1,194	1,890–2,395/ 1,250	2,351/1,414
Weight	kg	2,170 – 2,350	2,000–2,150	2,380–2,550	2,800–3,300	3,400
Travel speed Optional travel speed	km/h	0–15	0–20	0–20	0–20 0–30	0–20 0–28
Tipping load with bucket*	kg	1,550 – 1,620	1,215–1,437	1,393–1,958	1,910–2,640	2,032–2,269
Max. height of the bucket pivot point/max. dumping height	mm	2,710/2,017	2,693/2,011	2,540–2,871/ 1,720–2,022	2,560/1,700	3,208/2,300
Inside radius	mm	1,205	1,219	1,343–1,480	1,510	1,731

\*Loading frame – Straight machine



## Wheel loaders.



**WL34**



**WL38**

### Wheel loaders

	Unit	<b>WL34</b>	<b>WL38</b>
<b>Output</b>	<b>kW/hp</b>	45/61 (55.4/75)	45/61 (55.4/75)
<b>Bucket capacity</b>	<b>m<sup>3</sup></b>	0.62	0.64
<b>Height/width</b>	<b>mm</b>	2,220–2,420/1,550	2,371–2,548/1,570
<b>Weight</b>	<b>kg</b>	3,900	4,300
<b>Travel speed</b> <b>Optional travel speed</b>	<b>km/h</b>	0–20 0–28	0–20 0–28
<b>Tipping load with bucket*</b>	<b>kg</b>	2,925–3,055	3,719
<b>Max. height of the bucket pivot point/max. dumping height</b>	<b>mm</b>	3,270/2,460	3,251/2,379
<b>Inside radius</b>	<b>mm</b>	1,680	1,640

\*Loading frame – Straight machine

## Wheel loaders.



### Wheel loaders

	Unit	WL44	WL52	WL54
Output	kW/hp	45/61 (55.4/75)	55.4/75	55.4/75
Bucket capacity	m <sup>3</sup>	0.80	0.85	0.90
Height/width	mm	2,332–2,528/1,830	2,498–2,680/1,810	2,495–2,553/1,847
Weight	kg	4,600	5,100	5,800
Travel speed	km/h	0–20	0–20	0–20
Optional travel speed	km/h	0–30	0–30	0–30
Tipping load with bucket*	kg	3,327	3,949	3,270–3,583
Max. height of the bucket pivot point/max. dumping height	mm	3,200/2,430	3,240/2,470	3,671/2,864
Inside radius	mm	1,990	1,910	1,674

\*Loading frame – Straight machine



## Wheel loaders.



### Wheel loaders

	Unit	WL60	WL70	WL95	WL110
Output	kW/hp	74.4/101.2	100/136	100/136 (115/156)	115/156
Bucket capacity	m <sup>3</sup>	1.00	1.10	1.55	1.80
Height/width	mm	2,693/1,829	2,693/1,829	3,060/2,390	3,060/2,390
Weight	kg	5,930	7,140	10,387	11,250
Travel speed	km/h	0–20	0–20	0–20	0–20
Optional travel speed		0–30	0–30	0–40	0–40
		0–40	0–40		
Tipping load with bucket*	kg	3,674	4,762	6,529	7,739
Max. height of the bucket pivot point/ max. dumping height	mm	3,686/2,841	3,686/2,840	3,820/2,860	3,820/2,860
Inside radius	mm	1,666	1,666	2,450	2,450

\*Loading frame – Straight machine

## Telehandler.



### Telehandler

	Unit	TH412	TH522	TH627
Output	kW/hp	18.4/25 (33.3/45.3)	45/61	55.4/75
Bucket capacity	m <sup>3</sup>	0.45	0.71	0.85
Height/width	mm	1,995/1,564	1,950/1,808	1,985/1,960
Operating weight	kg	2,750–2,900	4,200	4,200–5,000
Travel speed	km/h	0–20	0–20	0–20
Optional travel speed	km/h	0–30	0–30	0–30
Max. payload (LSP 500 mm)	kg	1,250	2,200	2,700
Max. stacking height/ dumping height	mm	4,301/3,566	5,156/4,520	5,790/5,005
Turning radius over tires	mm	2,695	3,281	3,670

ZERO EMISSION

CONCRETE  
TECHNOLOGY

COMPACTION

DEMOLITION  
TECHNOLOGYGENERATORS,  
PUMPS, LIGHTING

EXCAVATORS

LOADERS,  
DUMPERS

## Attachments for wheel loaders & telehandlers (selection).



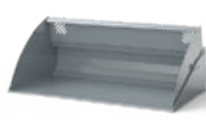
**4-in-1 bucket**  
(with ripper teeth)



**Light materials bucket**



**Side dump bucket**



**Grading bucket**



**Grab bucket**



**Stone bucket**



**Screed bucket**



**Pallet fork**



**Pallet fork**  
(fold-down)



**Pallet fork**  
(hydraulic, adjustable)



**Surface planer**



**Pot grabber**



**Stump grinder**



**Mulcher**



**Snowplow**



**V-shaped snowplow**



**Sweeper**



**Flail mower**  
with collection tray



**Earth auger**

## Wheel Dumpers.



DW20



### Wheel dumpers

	Unit	DW15e	1001	1501	1601	DW20
<b>Payload</b>	kg	1,500	1,000	1,500	1,500	2,000
<b>Operating weight</b>	kg	1,966–2,025	1,230–1,500	1,336	1,336	1,955–2,545
<b>Bucket Struck Piled</b>	l	650 800	415 525	650 800	829 1,044	1,200 1,500*
<b>Drive</b>		Electric motor	Yanmar 3TNV76	Yanmar 3TNV76	Yanmar 3TNV76	Yanmar/Diesel 3 TNV 76
<b>Rated power</b>	Ah/kWh	300/14.4	–	–	–	–
<b>Drive output (ISO 3046/1)</b>	kW/hp	6.5/8.7	18.9/25.7	18.9/25.7	18.9/25.7	18.9/25.7
<b>Maximum travel speed</b>	km/h	14	14	16	16	20
<b>Articulation angle</b>	°	± 33	± 33	± 33	± 33	± 36
<b>Turning radius</b>	mm	3,650	3,200	3,300	3,300	3,700
<b>Gradeability (theoretical)</b>	%	45	45	50	50	60
<b>Length</b>		3,300	3,080	3,220**	3,310	3,788
<b>Width</b>	mm	1,304	1,180	1,305	1,305	1,497
<b>Height</b>		2,535	2,580	2,550	2,550	2,760

\*\* Swivel tip skip

## Wheel Dumpers.



### Wheel dumpers

	Unit	DW30*	DW40	DW50
Payload	kg	3,000	4,000	5,000
Operating weight	kg	2,048–2,506	2,640–2,950	3,235–3,642
Bucket Struck Piled	l	1,420 1,800*	1,800 2,300	2,000 2,650
Drive		Yanmar/Diesel 3 TNV 76	Perkins / Diesel 403J-E17T	Deutz TD 2.2
Drive output (ISO 3046/1)	kW/hp	18.9/25.7	36/49	45/59.7
Maximum travel speed	km/h	20	25	25/30***
Articulation angle	°	± 36	± 36	± 37
Turning radius	mm	3,800	4,030	4,280
Gradeability (theoretical)	%	60	60	45
Length Width Height	mm	3,786 1,730 2,778	4,269 1,780 2,857	4,498 1,915 2,783

\*Front tip skip \*\*Swivel tip skip \*\*\*Optional

# Wheel Dumpers.

ZERO EMISSION

CONCRETE  
TECHNOLOGY

COMPACTION

DEMOLITION  
TECHNOLOGYGENERATORS,  
PUMPS, LIGHTING

EXCAVATORS

LOADERS,  
DUMPERS

## Wheel dumpers

	Unit	DW60	DW90
<b>Payload</b>	kg	6,000	9,000
<b>Operating weight</b>	kg	4,496–5,148	5,196–5,893
<b>Bucket Struck Piled</b>	l	2,700* 3,600*	3,600* 4,500*
<b>Drive</b>		Deutz TD 2.2 water-cooled diesel engine	Deutz TD 2.9 water-cooled diesel engine
<b>Drive output</b>	kW/hp	44.5/59.7	55.4/75.3
<b>Maximum travel speed</b>	km/h	25	25
<b>Articulation angle</b>	°	± 29	± 28
<b>Turning radius</b>	mm	5,125	5,750
<b>Gradeability (theoretical)</b>	%	60	60
<b>Length</b>	mm	4,496*	4,670*
<b>Width</b>		2,328*	2,486*
<b>Height</b>		3,241*	3,280*



## Dual View Dumpers.



DV90



DV100

### Wheel dumpers

	Unit	DV60	DV90	DV100
Payload	kg	6,000	9,000	10,000
Operating weight	kg	4,148–4,733	4,691–5,444	4,716–5,095
Bucket Struck Piled	l	2,700* 3,500*	3,750* 4,600*	4,150* 5,000*
Drive		Deutz TD 2.9 (DOC only)	Deutz TD 2.9 (DOC only)	Deutz TD 2.9 (DOC only)
Drive output	kW/hp	55.4/75.3	55.4/75.3	55.4/75.3
Maximum travel speed	km/h	30	30	30
Articulation angle	°	± 29	± 28	± 28
Turning radius (outside)	mm	6,110**	6,620**	6,660
Gradeability	%	55	50	50
Length		4,448	4,622	4,660
Width	mm	2,230	2,420	2,420
Height		3,377	3,382	3,382

\*Front tip skip \*\*Swivel tip skip



## Track dumpers.

DT08



DT10e



DT10



DT05



### Track dumpers

	Unit	DT05e	DT10e	DT05	DT08	DT10
Max. payload	kg	540	1,000	500	800	1,000
Operating weight	kg	500	890–1,030	495–620	595–710	665–915
Drive output	kW/hp	5.5/7.5	2/2.75	4.9/6.6	6.8/9.2	9.7/13.2
Travel speed	km/h	3	4	4	4	4
Gradeability when loaded	max. %	36	36	36	36	30
Bucket Struck Piled	l	260** 290**	334*** 427***	273*** 313***	334*** 387***	367 427
Length	mm	1,024**	1,803***	1,630***	1,660***	1,800
Width		589**	790***	660***	790***	790
Height		1,185**	1,270***	1,185	1,240	1,280

\* Gasoline version \*\* Diesel version \*\*\* Front tip skip \*\*\*\* Swivel tip skip

## Track dumpers.



### Track dumpers

	Unit	DT12	DT15	DT23
Max. payload	kg	1,200	1,500	2,300
Operating weight		685/940	1,345/1,695	2,265
Drive output	kW/hp	12/16.3	15/20.4	18.5/25.2
Travel speed	km/h	4	4/7.5	5/11
Gradeability when loaded	max. %	36	27	36
Bucket Struck Piled	l	393* 446*	660* 800*	1,100 1,400
Length	mm	1,882	2,674*	3,304
Width		790	1,080*	1,300
Height		1,280	2,585*	2,523

\* Front tip skip

# Wacker Neuson – all it takes.



Concrete technology



Vibratory rammers



Vibratory plates



Rollers



Demolition technology



Generators



Lighting



Pumps



Excavators



Wheel loaders



Telehandlers



Dumpers



Financial solutions



Repair & maintenance



Academy



EquipCare  
& EquipCare Pro



Rental



eStore



Spare parts



Used machines



ConcreTec



Concrete specialists



WN.EMEA.10085.V14.EN-US



Facebook  
wackerneuson



Instagram  
@wackerneuson



Youtube  
Wacker Neuson



LinkedIn  
Wacker Neuson



TikTok  
@wacker.neuson